

The Lakeview



The Lakeview Contemporary Farmhouse

4 Bedrooms 2 Bathrooms 1 Garage 2 Living Areas

The Lakeview Classic Hampton's

The 'Lakeview' is outstanding in its design, from its striking facade to its thoughtful layout. Featuring 4 spacious bedrooms, the master bedroom stands out with its own private balcony, walk-in robe, and ensuite. The open-plan kitchen, dining, and family rooms lead out to a spacious alfresco, making it perfect for entertaining family and friends.

Total house area: 203m²
Includes ground floor, first floor, garage, porch and alfresco

Features:

- 2.7m Ceiling height to ground floor
- Colorbond Roof
- Ducted air-conditioning
- 90cm Westinghouse appliances
- 20mm Stone bench top to Kitchen
- Coloured Concrete Driveway
- Custom Joinery to Laundry
- Tiles to ground floor
- Carpet to Staircase & Bedrooms
- Full height tiling in Bathroom & Ensuite
- Wall hung vanities in Bathroom & Ensuite
- Varroview Homes 'Quality Inclusions'

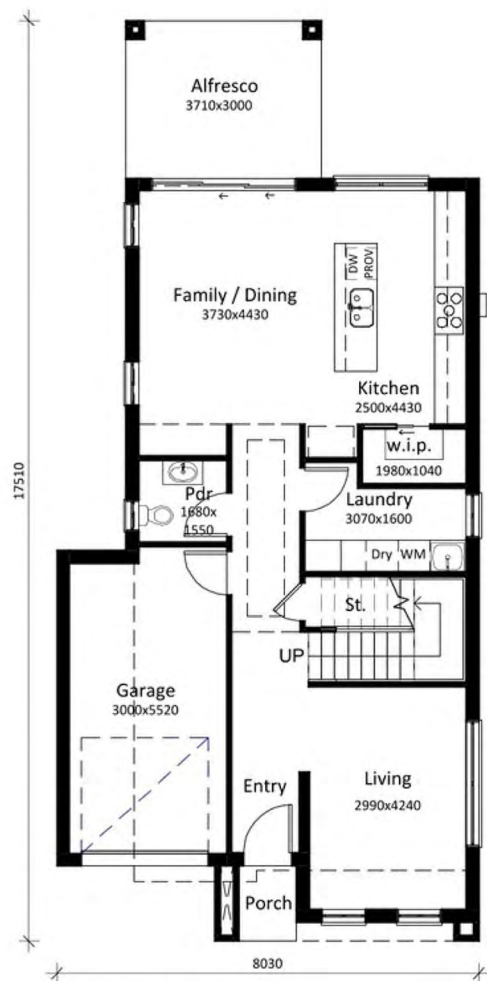
Total House Area:

203m²

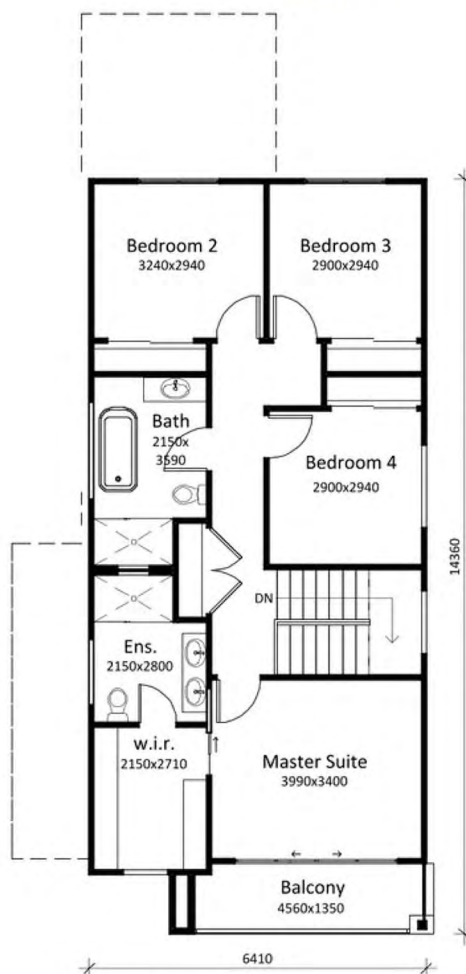
4 Bedrooms:

2 Bathrooms:

1 Garage



Ground Floor Plan



First Floor Plan

Tamee Rene' Brancati
sales@varroviewhomes.com.au
0407 293 632